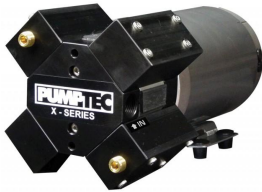


>



Model Number: 81520

Pumpteck 81520 X-6 Series M950 12V Pump Motor Set 43 Amp KFM 300Psi Freight Included GTIN 10679065073181

Manufacturer: Pumpteck

Pumpteck 81520 X-6 Series M950 12V Pump Motor Set 32 Amp KFM Stainless Valves
Manufacturer Description:

Pumpteck pump X-Series with plunger type design is the most efficient way possible to pressurize water. This efficiency produces up to 20% more pressure or flow for a given power input compared to competitive pumps. The series offers a variety of pump and motor combinations customized to meet specific application requirements. Typical applications include pressure cleaning, Pest spraying and misting. All pumps are factory lubricated for long-life Performance. The only tool to completely disassemble the pump to its basic components is a 3/16" hex wrench. Durability and Performance results from exclusive use of premium materials. All metallic wetted parts are stainless steel. An aircraft-grade anodized aluminum pump with Teflon hard-coat body is nearly indestructible compared to pumps made of castings. The body offers chemical compatibility with a wide variety of chemicals. Epoxy and other coatings are available for high and low pH applications. Flow and pressure can be optimized to exactly match power input to nozzle size, and offers an assortment of eccentrics for low, medium and high pressure to match your application requirement.

Performance Features

- Long Life
- High-Pressure
- High-Efficiency
- Serviceability
- Durability
- Application Flexibility
- Chemical Compatibility
- Compact Design
- Enhanced Priming

Features:

- Voltage: 12 VDC
- Max flow: 6.4 gpm
- Max pressure: 300 psi
- Port sizes: (1) 1/2" FNPT inlet, (2) 1/2" FNPT outlet
- Housing: Anodized aluminum
- Seals: T-Seal
- Valves: Stainless steel
- O-rings: KFM

>

Max draw: 43
Max fluid temperature: 140°F
Weight: 36 lbs

Factory Brochure

Availability: This product was added to our catalog on Sunday 13 October, 2019