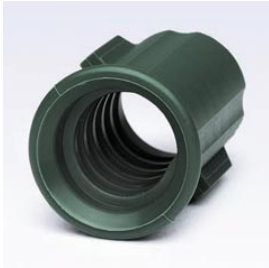


>



Model Number: UNGFWAI

Unger ACME INSERT FOR WATER WANDS

Manufacturer: Unger

Easily converts Water Wand Series Floor Squeegees, (UNG MW450, UNG MW550, UNG HM550, UNG HM750, UNG HW750), sold separately, from tapered sockets to Acme compatible sockets for use with tapered or threaded handles. Strong, polymer blend plastic.

*Availability: This product was added to our catalog on Monday 27 September, 2004*