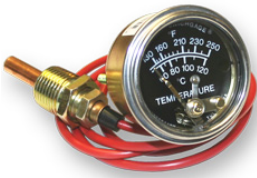


>



Model Number: 20T-250-8-1/2

Truckmount Switch Temperature Gauge 0-250 Degrees F 20T-250-8-1/2

Manufacturer: Clean Storm

Truckmount Switch Temperature Gauge 0-250 Degrees F

The 20T-250-8-1/2 is a 2" Temperature Switchgauge®.

This very popular design features a diaphragm-actuated, temperature-indicating gage, with a built-in electrical switch for tripping alarms and/or shutdown devices. This model has a 8 foot capillary length with a standard 1/2-14 NPT threading, and a temperature range from 130-250°F (54-121°C). Panel mountable.

Questions and answers are posted here:

<http://www.steam-brite.com/forum/showthread.php?p=2996#post2996>

Optional:

>



>

Granzow 21AN2K0T12XC : Solenoid Valve 12 Volts 360 degree 1450 Psi

1/4in Quick Disconnect Protective Sleeve Foam Cover

Availability: This product was added to our catalog on Friday 23 August, 2013